

# World Vision Art Auction Catalogue

Thursday 2 September, The Grange  
Middleton Grange School, Christchurch

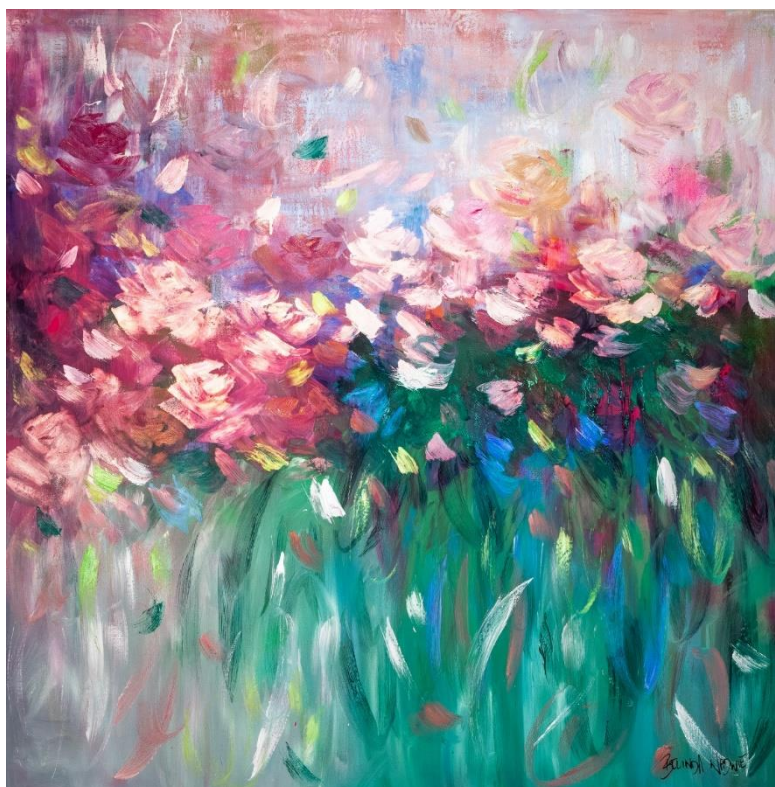
“Let my heart be broken with the things that break the heart of God.” - Bob Pierce,  
World Vision founder

## 1. The Magic of it All

Belinda Nadwie  
Oil and Acrylic  
1200mm x 1200mm  
Estimate: \$2100

Named “The Magic of it All” this piece shows a colorful abstract landscape painting. It was generously donated by Belinda Nadwie through Windsor gallery on 386 St Asaph Street.

Belinda Nadwie is an Australian artist known for her emotion-provoking abstract environment pieces, working with many different mediums including oil, charcoal, spray paint and oil crayons. She has a Bachelor of Fine Art from Curtin University, Perth, and has won many awards including the Art Lovers Australia People’s Choice Award 2018.



## 2. Autumn Afternoon in Lake Wanaka

Bill Moore

Oil

600mm x 400mm

Estimate: \$1,500 - \$1,900

Depicting the beauty of Lake Wanaka, this piece displays Central Otago in its Autumn glory.

Bill Moore was an award-winning artist based in Christchurch. He studied at Canterbury University School of Fine Arts, Christchurch Teachers College and St Martins School of Art in London. He taught art for thirty years, including at Middleton Grange School, before pursuing his art career full time. He has been described as a “prominent and prolific fine artist”; his works can be found in private collections within New Zealand and overseas.



### 3. Auckland Island Shag in Flight

Craig Potton  
Print in Ilford Galeria  
550mm x 400mm  
Estimate: \$900

Beautifully captured, this piece shows a Shag in flight in Auckland Island.

Craig Potton is a well-known New Zealand photographer, known for his exceptional photography of New Zealand wilderness. He has been appointed a member of the New Zealand Order of Merit and has worked as a location/stills photographer on many films including the Lord of the Rings and the Narnia series. Many of his works can be found in the Craig Potton gallery in Nelson.



#### 4. Still Life 2020

Jacinda Ardern  
Ink on card  
Framed at 350mm x 450mm  
Estimate: ?

This cartoonish drawing by Hon. Prime Minister Jacinda Ardern is a play on words as the style being still life, much the same as life during the 2020 lockdowns. This piece represents a significant time in New Zealand's history, drawn by the woman who led our country through that time.

Jacinda Ardern is a New Zealand politician who has served since 2017 as the 40<sup>th</sup> Prime Minister of New Zealand. Her leadership was very influential through the lockdown periods of 2020.



## 5. Passing the time

Deborah Fuller

Photographic imagery/mixed media

750mm x 750mm

Estimate: \$695 - \$795

Showing her distinct artistic style with a collaboration of Mixed Media Painting and Photography, this lovely piece evokes nostalgia depicting a vacant dwelling.

Deborah Fuller is a full-time artist who lives in Little River, Banks Peninsula. She has a distinct artistic style, and her works can be found in galleries around New Zealand. She owns her own gallery "lava" in Akaroa and Christchurch. Her works are also part of the Luciano Benetton Foundation NZ Collection exhibiting worldwide.



## 6. Ponamu in the Lagoon

Francis Gidden

Microfilm print

420mm x 330mm

Estimate: \$495

This piece is a Microfilm print, with hand applied impasto. Through vivid detail, it depicts a Ponamu in the Lagoon in Venice.

This superb piece was generously donated by Francis Gidden and the Impressionist Gallery NZ. Francis paints what appeals to him, whether it is architecture, flowers, trees or people. Many of his pictures are compositions from his travels, and he offers pictures and good quality prints.



## 7. Splash 137

Rick Edmonds

Giclee print

Framed at 400mm x 600mm

Estimate: \$350 - \$400

This stunning piece captures the beauty of the Marlborough Sounds, it is a limited-edition print on canvas from an original acrylic and airbrush painting.

Rick Edmonds is a Kiwi artist based in Moenui. He captures the raw beauty of the upper South Island. Rick has previously worked for the Department of Conservation, producing artwork for DOC Visitor Centers. Rick paints from his studio in Moenui, looking upon the water, bush, hills, and sky for inspiration.



## 8. Lockdown Series 2020

Rae Manson

Acrylic

Framed at 340mm x 340mm

Estimate: \$210

This piece is painted in acrylic paint on paper mounted on board. It was part of Rae's lockdown series and displays a stunning abstract piece.

Rae Manson is an abstract artist working mainly in acrylic and mixed media. Her abstract works invite the viewer to look deeper to discover hidden surprises, layers of texture and little snippets of interests that appear unseen from a distance. Her works are bright and energetic, and fit in well with natural décor.





## 9. Chanson D'Amour

Annie Guise  
450mm x 920mm  
Estimate: \$350 - \$400

Inspired by the French love song "Chanson D'Amour" by Manhattan Transfer; this piece embodies the song and displays it thoroughly.

Since the 1990's, Annie Guise has been learning and developing painting techniques, and has been tutored by some well-known New Zealand artists. Her childhood in Central Otago has given Annie a natural sense of color, texture, light, and landscape that can be seen in her art.



## 10. Landscape Small

Corina Hazlett

Oil

900mm x 300mm

Estimate: \$450-\$500

This piece was inspired by the sky and land where Corina lives in North Canterbury. In winter during a clear day, low clouds hang in the mountains, the low setting sun throws an amazing light into the landscape, in which this piece depicts.

Corina Hazlett paints predominantly large colorful acrylics, and is also the owner of Corina Hazlett Art Studio, where she holds art and upholstery workshops. With over 20 years of art education teaching and a diploma in Child and Adolescent Psychology, she works in rehabilitation using art as a tool for self-expression. Corina has received the Arts Access Aotearoa's Leadership award and has travelled with Hagar to Vietnam where she delivered her art program to victims of human trafficking.



## 11. Cathedral Cove

Linelle Stacey  
Print  
500mm x 250mm  
Estimate: \$95

This piece is a print of a large commission by Linelle Stacey, it captures the beauty of the Cathedral Cove Marine Reserve.

Linelle Stacey has an amazing range of beautiful New Zealand landscapes and abstract originals. She generally paints in pastels and acrylics and also has many stunning New Zealand made prints. Her work often captures the beauty of New Zealand mountains, lakes and beaches.



## 12. Flower Power

Karen Toledo  
Oil  
1200mm x 1200mm  
Estimate: \$400

Flower Power represents the local kiddie ride, an item that has been a part of the commercial landscape since its invention in 1930. This piece evokes themes of the early 60s non-consumerist pop culture, with vibrant colours.

Karen Toledo is a Colombian artist based in Christchurch. Using oil as her main medium, Karen's body of work draws on observing everyday life in contrast with ongoing social trends.



### 13. Morphis Landscapes

Matthew Musson  
Photograph  
Framed at 540mm x 410mm  
Estimate: \$390 - \$400

This piece is part of an ongoing series by Matthew Musson called Morphis landscapes. Using a longer shutter speed and hand movement he creates a blurred depiction of the environment. This piece was specifically photographed in Westport.

Matthew Musson is a freelance photographer based in Christchurch, he has a Bachelor of Arts (Photography) and a Post Grad Diploma in Creative Practise from Ara. He captures sports, events, wildlife and creative landscape photography.



## 14. Aspiring

Ross Gray  
Mixed Media on mdf  
Framed at 200mm x 290mm  
Estimate: \$500

'Aspiring' is part of a series exploring ideas about the battle to retain Christ Church Cathedral after the Canterbury earthquakes.

Ross Gray MFA (Dist) Dip Tchg is a Christchurch contemporary painter whose work has long been based around the theme of heritage, identity and memory. His most recent solo exhibition was a 2020 exhibition covering 50 years of work as a painter: 'Ross Gray: Then Again', Aigantighe Art Gallery, Timaru. His studio is located at Chambers Art Gallery 80 Durham St. <http://rossgrayartist.co.nz>



## 15. John Wayne

Andy Warhol  
Print  
Framed at 800mm x 840mm  
Estimate: \$300 - \$350

This piece is a beautifully framed print of Andy Warhol's John Wayne. It was done in pop art style and is a movie art piece.

Andy Warhol is a famous American artist known for his works such as Campbell's soup and Marilyn Monroe. This piece was generously donated by Windsor Gallery on 386 St Asaph Street, Christchurch.



## 16. Lake Wanaka

Ian Gardiner  
Photograph  
710mm x 350mm  
Estimate \$200

This stunning photograph depicts Lake Wanaka, accentuating the brilliant colours. It was taken on a Pentax camera and printed on a 260gm canvas with an Epson 3880 printed, using pigment inks and sealed with a UV matt spray

Ian Gardiner is a New Zealand photographer based in Christchurch. He has been tramping and climbing the New Zealand mountains for years, capturing amazing pictures. Most of his work focusses on mountain scenery.





## 17. Lake Manapouri

Joan Batten

Oil

Framed at 850mm x 650mm

Estimate \$675

This oil painting shows the stunning lake Manapouri, it was first painted in 1999 and then revised in 2018.

Joan Batten is based in Christchurch, she has been painting for many years – inspired at the age of twelve when she won an art competition. She paints traditional style paintings mainly with oil and watercolours. Her works have sold at Art Society exhibitions as well as private sales and commissions.



## 18. Towards the Craigieburn Range

Joan Batten

Oil

Framed at 480mm x 325mm

Estimate: \$275

This piece of the Craigieburn Range was painted in 1985, showcasing some of the beautiful environment seen around the South Island's Southern Alps.



## 19. Sunset at Milford

Joan Batten

Print

Framed at 340mm x 190mm

This beautiful print depicts a colourful sunset in Fiordland's lovely Milford Sound.



## 20. Pot of Gold

Joan Batten

Print

Framed at 225mm x 330mm

Showing a branch of New Zealand's native Kowhai tree, this print focusses on the Kowhai's brilliant yellow flowers.



## 21. Okain's Bay

Nicki Jackson  
Acrylic  
Framed at 330mm x 220mm  
Estimate \$60

This beautiful piece was inspired by Okain's Bay, a small bay in Banks Peninsula. It was in collaboration with another artist on Instagram, @colourful\_day\_dream as Nicki used her photo to base the painting on. It was part of a 50-day challenge where Nicki painted a piece every day after losing her job due to COVID-19.

Nicki Jackson specializes in mini landscape paintings. She aims to capture the feeling and colours that a camera cannot. Nicki mainly works in acrylics and shows very fine detail in her paintings.



## 22. Hereford Street in the Rain

Nicki Jackson  
Acrylic  
Framed at 220mm x 330mm  
Estimate: \$60

This highly detailed painting shows Hereford Street in Christchurch on a rainy evening. This piece was also done as a part of Nicki's 50-day challenge of painting a piece each day after losing her job due to COVID-19.



### 23. Matai Falls in the Catlins

Carol Moffat

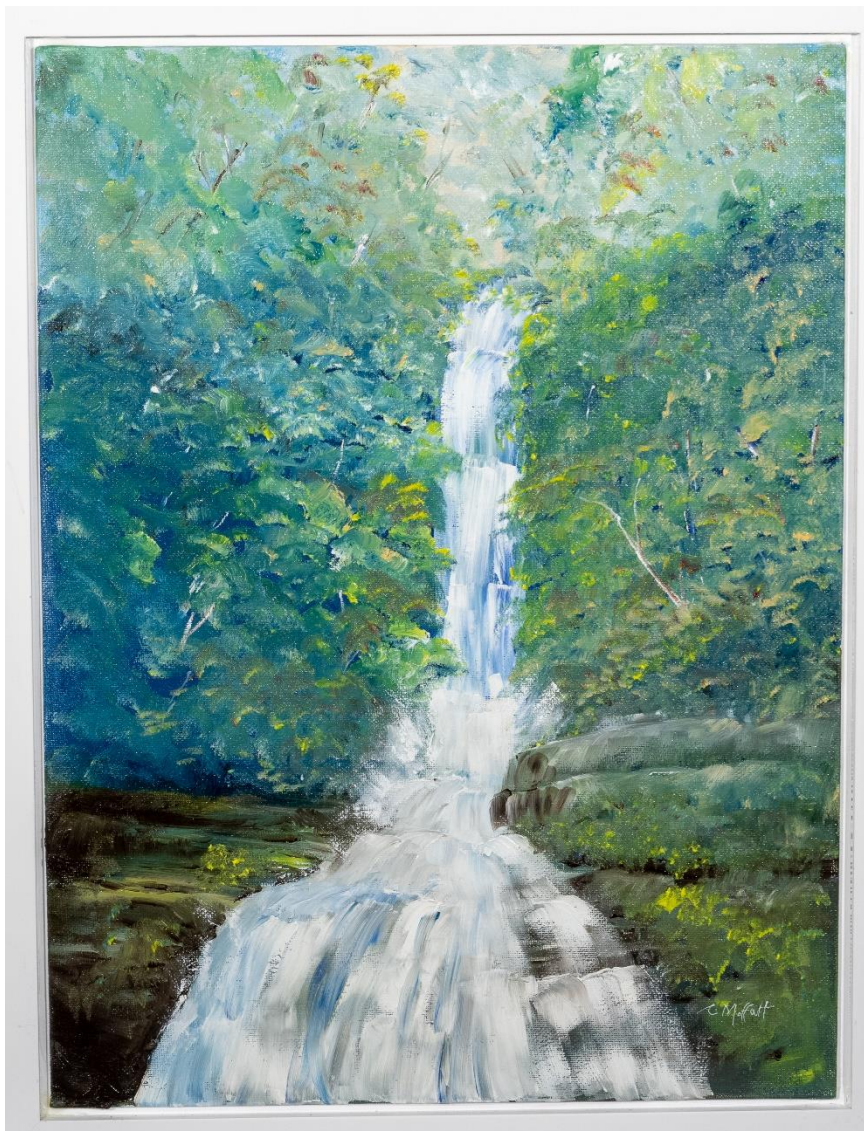
Oil

Framed at 345mm x 450mm

Estimate: \$350

This framed oil piece shows the stunning Matai falls in the Catlin's. The waterfall depicted in this piece can be seen on the rail trail in Caberfeidh.

Carol Moffat is based in North Canterbury. Her main median is water colour, but in recent years she was begun to experiment with oil paintings. Carol mainly focusses on the environment, saying "The world around me is where I draw my ideas and inspiration from."



## 24. The Stream

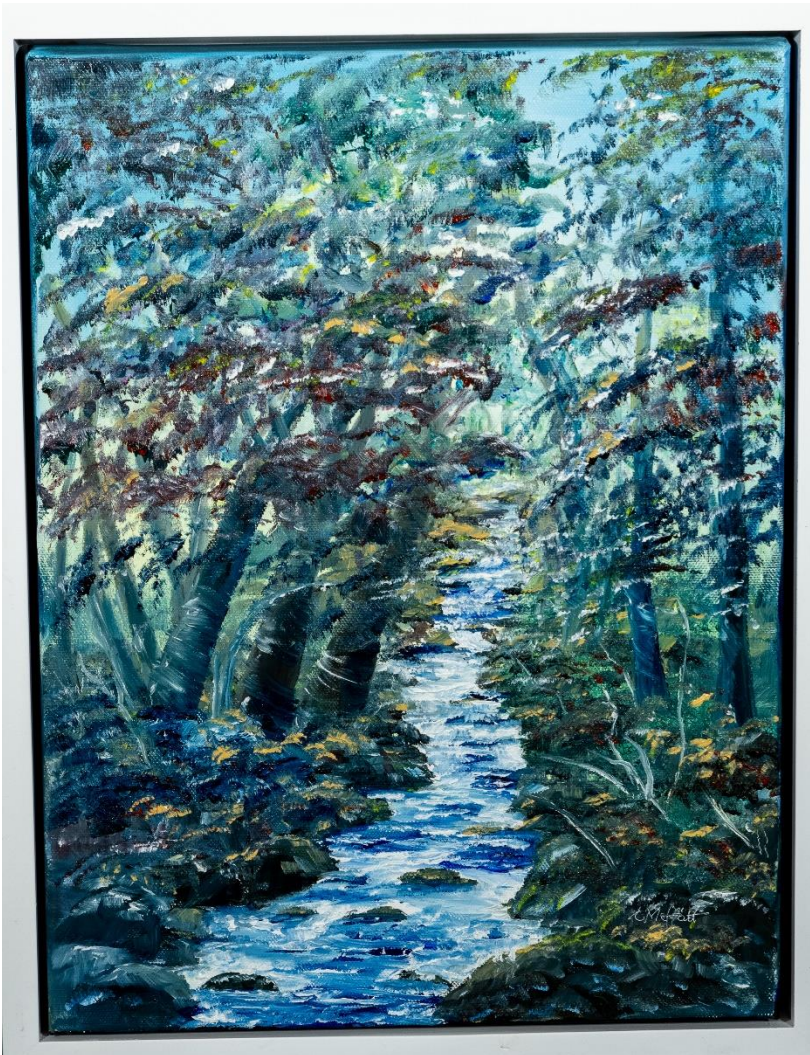
Carol Moffat

Oil

Framed at 340mm x 440mm

Estimate: \$250

This lovely oil painting has no specific place of inspiration, rather Carol drew upon her many experiences of New Zealand's beautiful landscapes. It was one of her first oil paintings.





## 25. Sunflowers

Sharon White  
Acrylic  
510mm x 250mm  
Estimate: \$180

This colourful piece depicts a field full of beautiful sunflowers. It was inspired by Van Gogh's sunflower painting, and the reference photo was supplied by Denise McQuillan.

Sharon White is a local self-taught artist who experiments with different acrylic pouring techniques. Her lovely pieces are embellished with hand paintings, following the colour combinations of the pouring.



## 26. Mitre Peak

Sharon White  
Acrylic  
310mm x 310mm  
Estimate: \$90

The acrylic painting was inspired by Sharon's own memories and photos of Mitre Peak in Fiordland's stunning Milford sound.



## 27. Colour my Life

Des Bailey

Oil

400mm x 500mm

Estimate: \$95

This stunning piece shows a smattering of colours and beautiful flowers. It was painted in Des's garage during the 2020 lockdown.

Des Bailey is a pharmacist by trade but enjoys art in his spare time. During the 2020 lockdown, he completed works in his garage.



## 28. Graphic Work

Galina Kim  
Mixed media graphic  
Framed at 320mm x 440mm  
Estimate: \$150

Galina was inspired during the 2020 lockdown by the 100 Day Project. She was encouraged to do daily observational drawings of plants. This mixed media graphic design is different from her usual pieces, but still shows her unique style.

Galina Kim studied Fine Arts and design at the Art College in Kiev, Ukraine, and graduated with honours, also continuing her studies at the Art Academy in L'vov. Her works are an abstract contemporary style, using acrylic and mixed media. She has exhibited in Europe and New Zealand.



## 29. Adjumani Refugee Settlement

Helen Manson  
Photograph  
Framed at 450mm x 620mm  
Estimate: \$150 - \$200

The stunning piece shows the sun setting in Adjumani Refugee Settlement, Uganda, after approximately 180,000 refugees are fled to after war in South Sudan. In total 1.4 million refugees live in Uganda, and World Vision is working tirelessly in communities just like this to help these survivors of war.

Helen Manson is a multi-award-winning humanitarian photographer and storyteller. Her work has taken her all around the world to many extremely challenging places, including refugee camps, disaster zones and post war environments. Helen captures many different scenes, giving perspective and showing the reality of many people.



### 30. Mackenzie Country

Breanna Hunt  
Acrylic  
Framed at 350mm x 420mm  
Estimate: \$100 - \$150

This piece shows the splendour of the beautiful Mackenzie country through vivid detail and colours. It was inspired by a reference photo taken by Breanna.

Breanna Hunt enjoys art in her spare time and has had works sold in several galleries. She is currently a student at the University of Canterbury, and previously went to Middleton Grange.

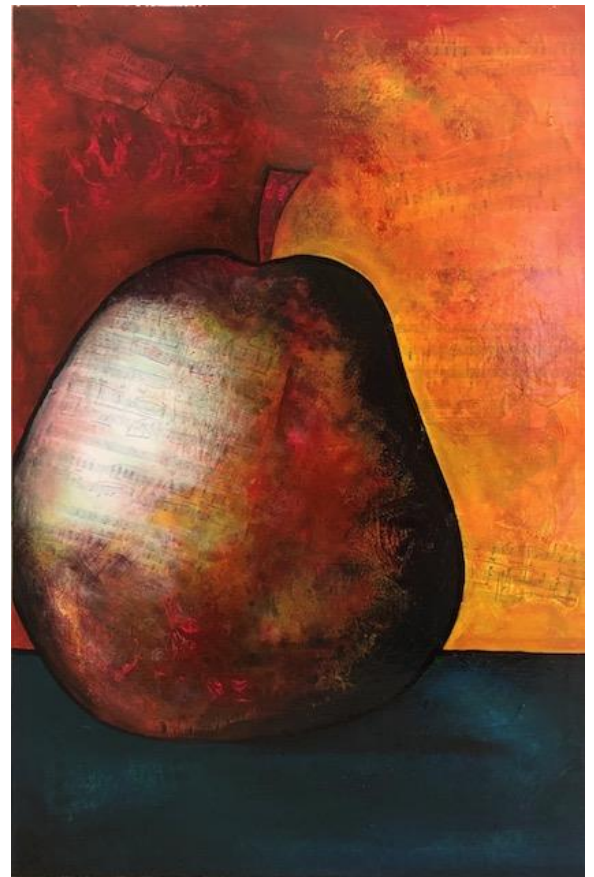


### 31. Abundance

Fiona Wilson  
510mm x 760mm  
Estimate: \$200- \$250

The pear is seen by some to allude to the love of Jesus for mankind. It can represent the promise of salvation and eternal life. The music is from an old score about the Garden. I intended them to work together to show the promise of God's presence and peace as was originally intended in the Garden of Eden.

Fiona Wilson is a mother, teacher and aspirant artist. These pieces are to support World Vision and Middleton Grange in the work they do for the poor and affected in Sub-Saharan Africa.



### 32. Resilience

Fiona Wilson  
Framed at 470mm x 570mm  
Estimate: \$50 - \$100

Dandelions can thrive in difficult conditions and can be a symbol of rising above life's challenges, though it looks seemingly fragile and temporary. The image is of the seeds blowing in the breeze: the Holy Spirits enabling to go beyond ourselves as well as breathing new life into the world.

### 33. Sugar Skull

Lisa Cameron  
Dale Goddard  
Mixed media, spray paint and acrylic  
Estimate: \$250

This highly detailed piece is a mixed media, spray paint and acrylic piece. It was inspired by a sugar skull and Mexican idea of the dead.

Dale Goddard is an Art, English, and Social Studies teacher at Middleton Grange School. She enjoys doing art in her spare time and works in many different mediums showing vivid colours and detail.

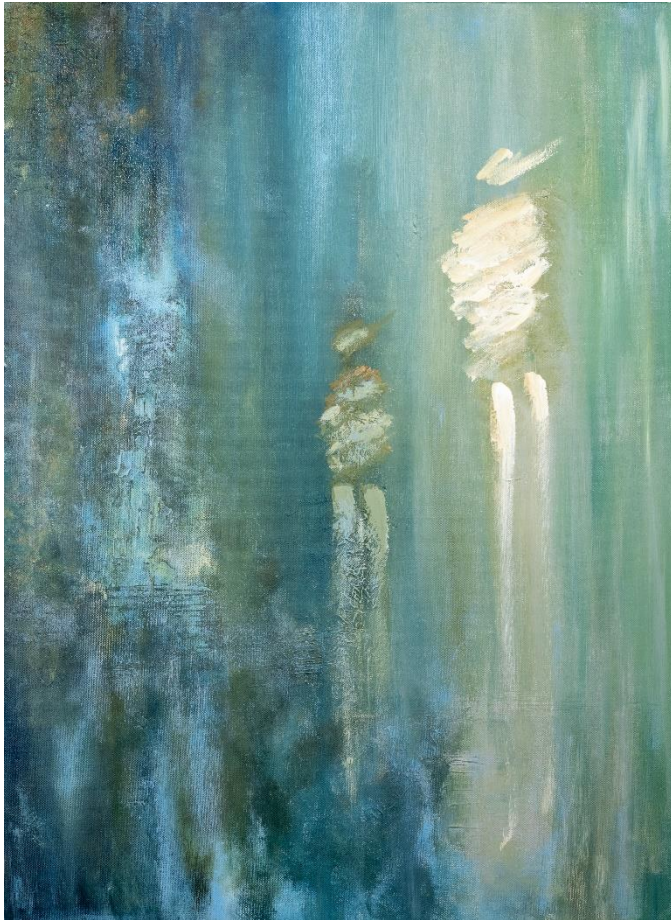




### 34. Lisa Cameron 1(blue)

Lisa Cameron  
Acrylic  
560mm x 760mm

Lisa Cameron is a local kiwi artist who enjoys art in her spare time, these three works are all pieces she did in her art class.



**35. Lisa Cameron 2 (lines)**

Lisa Cameron  
Acrylic  
460mm x 710mm



**36. Lisa Cameron 3 (orange)**

Lisa Cameron  
Acrylic  
400mm x 1010mm



## 37- 44. Range of prints

Hannah Jenson  
Prints  
320mm x 450mm  
Estimate: \$80 - \$140

This large range of prints demonstrate Hannah's artistic style. They all beautifully portray a range of different themes.

Hannah Jenson is a multidisciplinary artist well-known for her carved work. She has a Bachelor of Visual Arts from Auckland University of Technology. Hannah has a great passion for the outdoors, and her works are often inspired by her time spent in nature. Her works show a unique stylistic approach.

